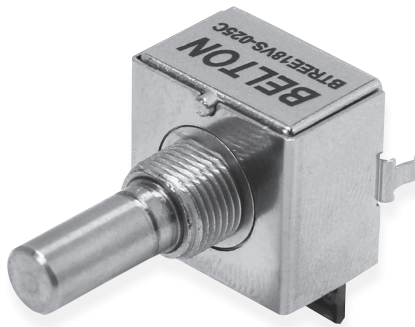


# OPTICAL ENCODER SWITCH

## BTREE18 SERIES

### 18mm Economic type Optical Encoder with push-button switch



#### Features

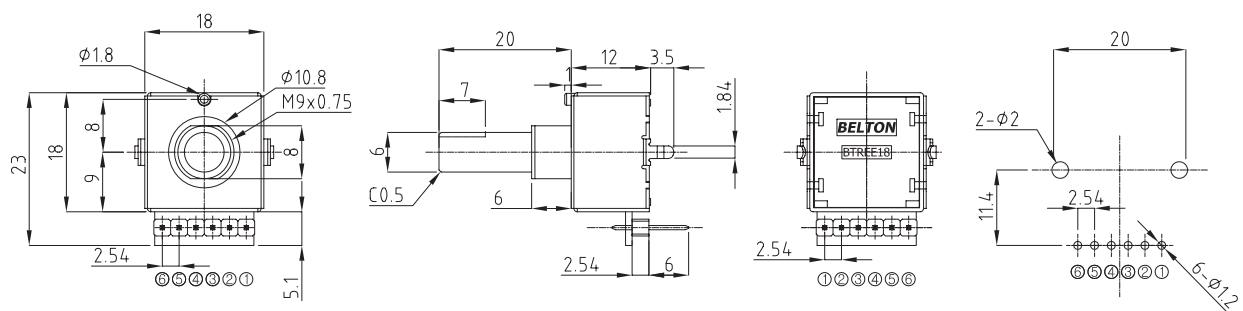
BTREE18 Series ;

- Zn diecasting housing with metal shaft
- 1,000,000 with vertical/horizontal mounting type
- Fixed 25 pulses per rotation with fine square wave of output by adopting proper IC and chip mounted circuits
- 25 steps of mechanical click and capable to build push-button switch in

#### Applications

- All kinds of level control, tuning and position setting in the digitalized medical, measuring, radio equipments and communication equipments, etc

#### Standard Dimensions



Terminal	Function
1	GROUND
2	For Switch
3	For Switch
4	Output 'B'
5	Output 'A'
6	Power 5V

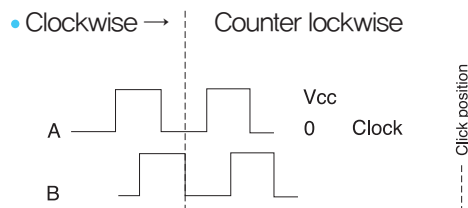
# OPTICAL ENCODER SWITCH

## BTREE18 SERIES

### Product Classifications

Mounting Method	Mechanical Click	Push-button switch	Pulse no.	Part no.
Horizontal (BTREG18H)	X	X	25	BTREG18H-025N-Shaft
	O	X	25	BTREG18H-025C-Shaft
	X	O	25	BTREG18HS-025N-Shaft
	O	O	25	BTREG18HS-025C-Shaft
Vertical (BTREG18V)	X	X	25	BTREG18V-025N-Shaft
	O	X	25	BTREG18V-025C-Shaft
	X	O	25	BTREG18VS-025N-Shaft
	O	O	25	BTREG18VS-025C-Shaft

### Output Wave



### Electrical specifications

- Supplying Voltage : DC 5V  $\pm$  5%
- Push-button switch : 50mA, 12V DC
- Supplying Current : 20mA Max
- Phase difference :  $90^\circ \pm 45^\circ$
- Output Wave : Incremental with Rectangular Wave
- Resolution : 25 Pulses / rotation
- Frequency Response : 100Hz
- Insulation Resistance : 100 Mohms on 250V DC
- Withstanding Voltage : 1min. at 300V AC
- Electrical Life : Over 1,000,000 cycles

### Mechanical specifications

- Mechanical Click no. :  
25 positions only per rotation =  $14.4^\circ$
- Rotational Torque :  $50 \pm 20$  gf · cm
- Mechanical Life : Over 1,000,000 cycles
- Soldering Temp. : 5sec. on the  $260^\circ\text{C}$
- Temp. Range of Operating :  $0^\circ\text{C} \sim +50^\circ\text{C}$
- Panel mounting screw strength : 8 Kgf · cm

### Suggested Ordering Code

<div> <div>BTREG18</div> <div>V</div> <div>S</div> <div>.</div> <div>0</div> <div>2</div> <div>5</div> <div>C</div> <div>.</div> <div>R</div> <div>2</div> <div>0</div> <div>.</div> <div>M</div> <div>T</div> <div>R</div> </div>							
Mounting Method	Push-button Switch	No. of Pulse	Mech. Click	Shaft Type	Shaft Length	Terminal Type	Terminal Direction
V : Vertical	O : without	25(fixed)	N : without	R : Round		F : Female	F : Front
H : Horizontal	S : with		C : with	F : Flat		M : Male	R : Rear